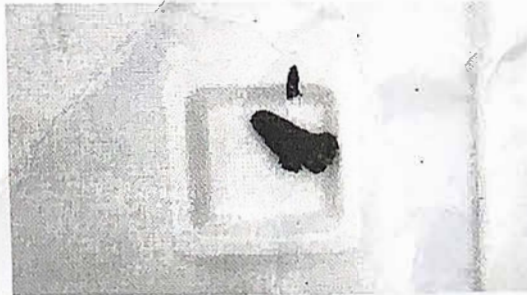


# Certificate of Analysis Cannabinoids

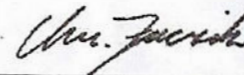
Reference: ----- Client: Plantoflife  
Sample date: ----- Sample ID: 17300445  
Bloomday: ----- Sample material: resin  
Description: Jelly CBD

Abbr.	Substance	Result	unit
P-GEW	Sample weight	1,577	g
T-CBD	Total Cannabidiol (CBD + CBDA)	22,26	% (w/w)
CBD	Cannabidiol	20,97	% (w/w)
CBDA	Cannabidiolic acid	1,47	% (w/w)
T-THC	Total Tetrahydrocannabinol (THC + THCA)	0,07	% (w/w)
D9THC	D9-Tetrahydrocannabinol	0,05	% (w/w)
THCA	Tetrahydrocannabinolic acid	0,02	% (w/w)
D8THC	D8-Tetrahydrocannabinol	ND**	% (w/w)
T-CBG	Total Cannabigerol (CBG + CBGA)	0,14	% (w/w)
CBG	Cannabigerol	0,11	% (w/w)
CBGA	Cannabigerolic acid	0,04	% (w/w)
CBN	Cannabinol	ND**	% (w/w)
CBC	Cannabichromene	0,04	% (w/w)
THCV	Tetrahydrocannabinavarin	0,10	% (w/w)
CBDV	Cannabidivarin	0,88	% (w/w)
CBDVA	Cannabidivarinic Acid	ND**	% (w/w)

Picture of the received sample on 19.04.2023



Head of Laboratory Services



Ing. Christian Fuczik, Chemist

**Footnote:**

\*\*\*) ND =not detectable. The measured value was below the limit of detection of 0.01 % or 100 mg/kg.

The expected measurement uncertainty varies with substance and concentration and can be assumed to be a maximum of 10 %.

For the calculations of the equivalent sums, the respective acid forms were multiplied by the factor 0.877 or 0.878 to conclude the equivalent amount of the neutral form.

Method of analysis: HPLC-DAD (High Performance Liquid Chromatography - Diode Array Detector) according to Ph.Eur. 2.2.29 (European Pharmacopoeia)

This Certificate of Analysis may only be reproduced as a whole and not in parts. Any alteration is punishable under § 223 StGB (Austrian Penal Code) (forgery of documents).